



# NAIPI NEWS

October 21, 2014

## Announcement: Leslie Thompson's Departure and Replacement by Whitney Floch

Leslie Thompson, NAIPI Administrative Assistant, recently accepted a position at Washington State University. Her last day with NAIPI and Idaho INBRE will be Friday, November 7<sup>th</sup>. Please help me thank her for all her exceptionally wonderful work....and congratulate her on her new position and opportunity. We will miss you, Leslie!

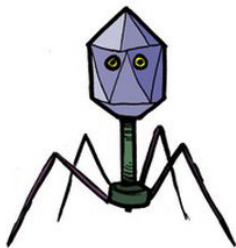
I am happy to announce that Whitney Floch, in the Idaho INBRE administrative office, will take over Leslie's NAIPI duties. Whitney's contact information is below. Welcome, Whitney!

## NAIPI Needs Your Photos ASAP

We are designing the new NAIPI website and want to highlight your programs. Please send us photos of IDeA funded labs, people, and students and include information for proper photo credit. Please email them to [whitneyf@uidaho.edu](mailto:whitneyf@uidaho.edu).

Warmest regards,

## KEEP SMILING!



**Virus**



**Retrovirus**

### Contact NAIPI:

Carolyn H. Bohach, Ph.D.  
NAIPI President  
[cbohach@uidaho.edu](mailto:cbohach@uidaho.edu)  
(208) 596-1747

Whitney Floch  
Idaho INBRE Program  
Coordinator  
[whitneyf@uidaho.edu](mailto:whitneyf@uidaho.edu)  
(208) 885-2097

New website soon:  
[naipi.org](http://naipi.org)